

SEIKA5

Braille Display

User's Manual
Version 5.0



Preface

Thank you very much for purchasing Seika Braille Display.

The Seika refreshable Braille display provides a tactile interface to your computer.

Before using the Seika display, please read this user's manual.

If there is anything that you don't understand about using the display, or if you find mistakes or omissions in this user's guide, please contact distributors by letter, FAX, or telephone.

Safety Precautions:

This User's manual describes safety precautions according to the following level and marks of warning.

Warning mark	Mark to Prohibit	Procedures
		
Warning Caution	Actions Prohibited	Disconnect the power plug



【Warning】

This precaution must be followed, or it could cause of fire or electric shock which could result in serious injuries or death.



【Caution】

This precaution must be followed, or it may cause of electric shock and/or any other accidents which may result in injuries and/or partial damage of the products or surrounding equipment.

- Unauthorized reproduction of this document, in whole or in part, is strictly prohibited.
- Modifications to the contents of this document for improvements or revisions may be made without prior notification.
- Product liability is limited within the country of original purchase.

Table of Contents

Quick Installation Guide	1
Chapter 1 – Overall description of the Seika Braille Display.....	2
1. Name and Functions of All Components.....	2
1.1 Overall Illustration of the Product	2
1.2 Description of the right side	4
1.3 Description of the left side	6
2. Three Working Modes.....	6
3. Beeps Alarm	6
4. Sleep mode.....	7
Chapter 2 - Setup	8
1. Service Precautions (at setup time).....	8
2. Installation Space	8
3. Operating Environment.....	9
4. Precautions for Moving	9
Chapter 3 - Seika Braille Display Driver.....	10
Chapter 4 – Configuring the Bluetooth Connection.....	11
Chapter 5 – Using Seika Braille Display with JAWS	13
1. Installing Seika Patch for JAWS.....	13
2. Working in JAWS.....	13
2.1 Configuring JAWS	13
2.2 Navigation and control keys function.....	16
3. Uninstalling the patch of JAWS	19
3.1 Uninstall the old version of Seika patch for Jaws	19
3.2 Uninstall the current version of Seika patch for Jaws	19
Chapter 6 – Using Seika Braille Display with Window-Eyes	20
1. Working in Window-Eyes.....	20
1.1 Configuring Window-Eyes 7.2.....	20
1.2 Configuring Window-Eyes 7.5.....	21
2. Navigation and Control keys function	23

3. Update the Seika Braille Display patch for Window-Eyes	25
Chapter 7 – Using Seika Braille Display with HAL and Supernova.....	26
1. Working in HAL and Supernova	26
1.1 Configuring HAL Version 10	26
1.2 Configuring Supernova Version 11 and Version 12	29
2. Navigation and Control keys function	34
Chapter 8 – Using Seika Braille Display with COBRA.....	36
1. Configuring COBRA	36
2. Navigation and Control keys function	38
Chapter 9 – Using Seika Braille Display with NVDA.....	39
1. Configuration of BRLTTY	39
2. Configuration of NVDA.....	39
3. Reconnection.....	40
4. Navigation and Control keys function	40
Chapter 10 – FLASH DISK READING MODE.....	41
1. Quick Start	41
2. Control keys.....	42
2.1. File Selection.....	42
2.2. File Reading	43
3. Quit.....	43
Chapter 11 - Display Specifications	44
Q&A	45
1. How to verify which Virtual COM port has been used by Seika Braille Display	45
2. How to uninstall the Seika Braille display driver	45
3. Braille display doesn't work.....	45
3.1 Check Seika Braille display driver	46
3.2 Check the screen reader configuration.....	46

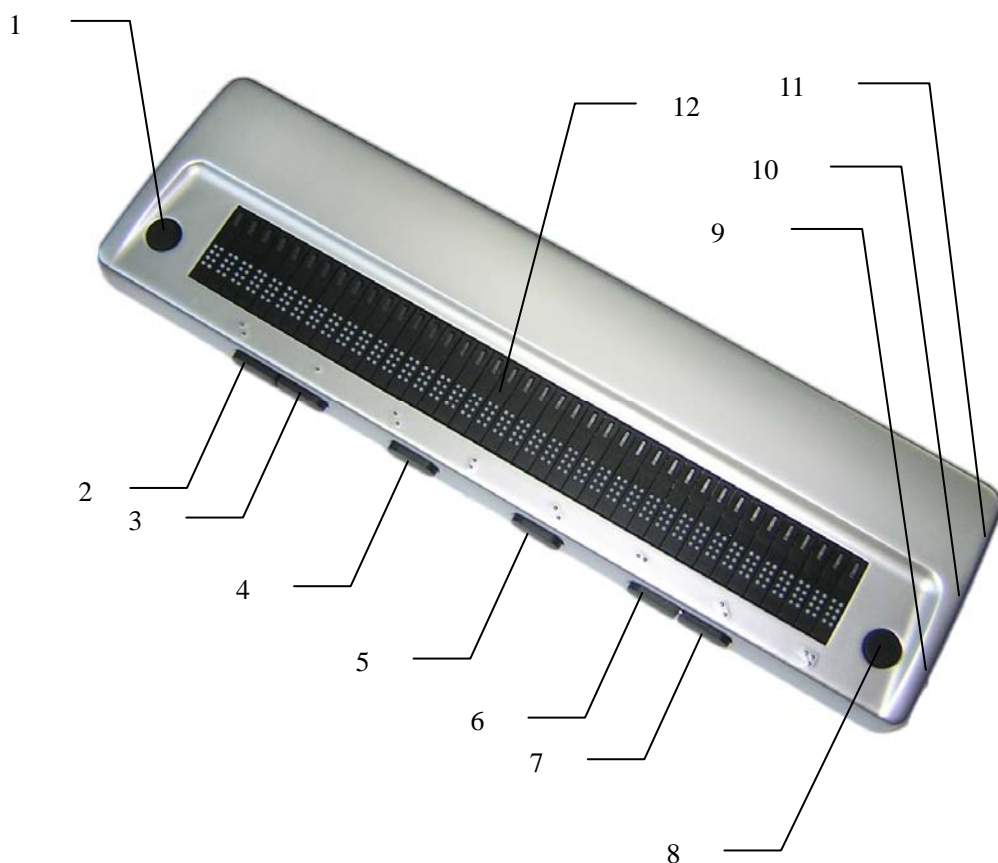
Quick Installation Guide

- The below steps assume that you have installed the screen reader and windows in their default locations.
- Install Seika Braille display driver (refer to Chapter 3).
- Install the Seika patch program and configure your screen reader (refer to Chapter 5 for Jaws, Chapter 6 for Window-eyes, Chapter 7 for HAL and Supernova, Chapter 8 for COBRA, Chapter 9 for NVDA).

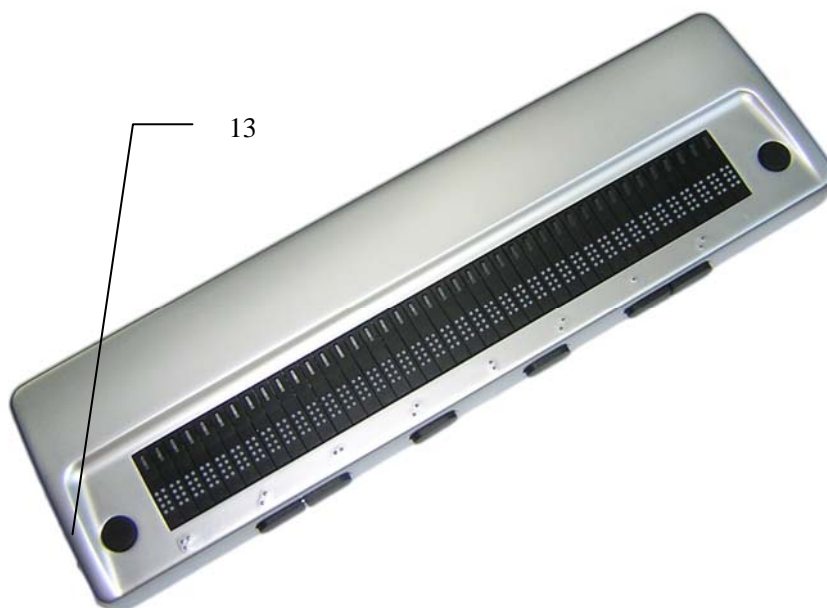
Chapter 1 – Overall description of the Seika Braille Display

1. Name and Functions of All Components

1.1 Overall Illustration of the Product



1~8---Navigation and Control Keys 9---Power Switch
10---USB Port for flash disk 11---Mini USB Port 12---Display



13--- DC IN

Seika Braille Display's size:

12.99(W) x 3.58(D) x 0.98(H) inches and weight: 640g

Display

There are 40 refreshable Braille cells (8-pin).



【Caution】: Please touch the Braille cell with clean finger, otherwise the dust will block the pins.

Cell Position Mark

It marks the cell position. There is the position mark per 5 cells. From left to right the position mark means the 5th, 10th, 15th, 20th, 25th, 30th, 35th, 40th cell.

Navigation and Control Keys

Place the Seika Braille Display on a flat surface with the Braille display facing upwards and the buttons facing towards you.

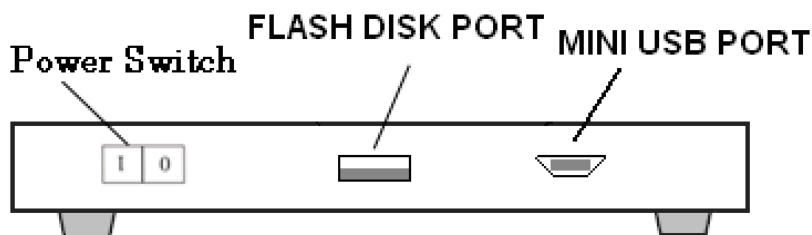
Top surface keys are located on the top of the Seika Braille Display.

- Behind the Braille cells are the **CURSOR ROUTING BUTTONS**.
These tiny buttons are used to move the computer's cursor directly to a particular location on the screen.
- Near each end of the Braille display is a small round button. The **LEFT BUTTON** is to the left and the **RIGHT BUTTON** is to the right.

Front panel navigation keys are located on the front edge, facing the user.

- On the left half of the front panel is the **LEFT CTRL** which contains **LEFT CTRL LEFT** and **LEFT CTRL RIGHT**.
- In the middle of the front panel are two buttons. The **LEFT SHIFT** is toward the left and the **RIGHT SHIFT** is toward the right.
- On the right half of the front panel is the **RIGHT CTRL** which contains **RIGHT CTRL LEFT** and **RIGHT CTRL RIGHT**.

1.2 Description of the right side



Power switch

On the right side of the display, there is the ON/OFF switch. Push the front side to turn on the display and push the rear side to turn off the display. When you connect the Braille display with computer through Bluetooth or read flash disk, you need turn on the display. If you connect the Braille display with computer through USB cable, the computer will power the Braille display, so you don't need turn on the switch.

Flash Disk Port

On the right side of the Braille display, there is a rectangle USB port. You could plug in a USB flash disk and read the files in it. Please refer to the Chapter 9 for more details,.

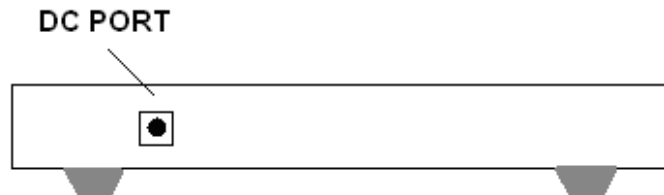
Mini USB Port

On the right side of the display, there is a Mini USB port which is used for connecting with the computer through a MiniUSB cable.



【Caution】 : When a laptop computer is used for operating the Braille display, please make sure that it is supplied with power via the electrical cable rather than battery. Otherwise it may cause a deficiency in the power supply.

1.3 Description of the left side



DC-IN

On the left side of the display, there is a 3.5 mm, DC 5V jack, with center pin positive. Plug the cord from the AC power adapter into the DC IN jack.

2. Three Working Modes

- USB cable mode: Seika works with screen reader through USB cable.
- Bluetooth mode: Seika works with screen reader wirelessly through Bluetooth.
- Reading flash disk mode: Seika displays the files in the flash disk.



【Caution】 : Before you switch to other working mode, please power off the Seika Braille display (Turn off the switch, pull out the MiniUSB cable)

3. Beeps Alarm

- Short beep once: The Braille Display is powered by adapter or battery.
- Beep twice: The Braille Display is powered by computer through USB cable.

- Beep one low tone and one high tone: Enter the Flash disk mode.
- Beep one high tone and one low tone: Flash disk is pulled out or exit the Flash disk mode.
- Short beep three times: Braille Display shuts down automatically (no operation within one hour).
- Beep two high tone: The adapter is connected.
- Beep two low tone: The adapter is unconnected.
- Beep three down tone every ten minutes: low battery alarm.
- Beep three up tone: battery is charged fully.

4. Sleep mode

The Braille display will sleep if there is not any operation within one minute. You could wake up the Seika Braille display by press any button or activate your screen reader.

The Braille display will shut down automatically if there is not any operation within one hour. You could wake up the Seika Braille display by restart power.

Chapter 2 - Setup

1. Service Precautions (at setup time)



【Prohibited】: Avoid using the display in the following conditions, which may cause malfunctions.

- Direct sunlight, near air conditioners or outside.
- High humidity, such as those near a water supply or humidifier, or any place with water, oil, or chemicals.
- Avoid contact with dust, waste particles, near open windows, or locations with any toxic gases or iron powder.



【Caution】: Please touch the Braille cells with clean finger, otherwise the dust will block the pins.

Also, do not install the display near any televisions, radios, speakers, short-wave radios, or anything that is magnetic or emits radio waves. If you use it adjacent to any of these items, it can interfere with reception.

2. Installation Space



【Caution】: Install the product in a location which meets the following criteria:

- The product must be installed on a level surface.
- It is recommended to avoid putting anything heavier than a

keyboard or a laptop computer or similar on top of the device as it may cause malfunction.

3. Operating Environment

- Temperature: 41 – 95 °F (5 – 35 °C)
- Humidity: 20 - 80% (no condensation)

4. Precautions for Moving



【Warning】

- Violent shaking or vibrations at the time of moving may cause product failures.



【Requirement】

- Turn off the computer which is connected with the Seika, and disconnect the USB cable, then move the Seika.

Chapter 3 - Seika Braille Display Driver

You can connect the Seika Braille display to your computer through either the USB port or Bluetooth. If you will use USB cable, you need install the driver. If you will use Bluetooth, please refer to the Chapter 4.

Installing Seika Braille display driver (Windows XP / Vista / Windows 7)

Before using Seika with the screen reader, please install Seika Braille display driver. Make sure that Seika Braille display is not connected to your computer.

- Run "*Seika Driver XP_Vista_Win7 V6.3a.exe*" in the "Seika driver" folder in the CD.
- Select "Install" to install Seika Braille display driver.
- When prompted "Installation Successful", press ENTER.
- Follow the instruction and restart your computer.
- The Seika driver is installed successfully.

Chapter 4 – Configuring the Bluetooth Connection

Bluetooth is a short-range wireless communications technology. Seika with Bluetooth capability can communicate with computer over a distance of about 10 meters (30 feet) without requiring a USB cable.

In order to use Seika Braille display through Bluetooth, you need establish a partnership with a Bluetooth enabled computer. The majority of laptops offer built-in Bluetooth support. If your computer does not have built-in Bluetooth, you need plug in an external USB Bluetooth dongle and install the appropriate drivers on your computer.

Here are instructions for setting up the Bluetooth connection between the Braille display and computer.

- Do not plug in the USB cable.
- Turn on the Braille display. It beeps once, and it displays the firmware version information and Bluetooth name.
- Make sure that Bluetooth is enabled on the computer. If you are using an external USB Bluetooth adapter, insert it into your computer.
- Open Bluetooth control software, and search for Bluetooth devices. It will take several seconds. When the search is complete, the Braille display Bluetooth name TS5 is in the list of devices.
- Select TS5 from the list. If the computer doesn't find the Braille display, please make sure you turn on the Braille display, and then search again.
- In the Bluetooth pin passkey edit field, type Braille display pin code "0000".

- After a few seconds, you will receive a message that the Bluetooth device was successfully connected and the outgoing and incoming COM port assignments are displayed. Make a note of the outgoing port number as this is the port the screen reader will use to communicate with the Braille display.

Now please configure your screen reader to use the Bluetooth COM port. To configure the COM port in the screen reader, please refer to the chapter 5 for Jaws, chapter 6 for Window-eyes, chapter 7 for HAL and Supernova, chapter 8 for COBRA.

Chapter 5 – Using Seika Braille Display with JAWS

(For JAWS version 10.0.1154 and later)

NOTE:

The below steps assume that you have already installed Seika driver and Jaws version 10.0.1154 or later. If you have not installed Seika driver, please refer to Chapter3.

If you have already installed the older version of Seika Patch for JAWS, please uninstall the old version of Seika patch refer to the 5.3.1 Uninstall the old version of Seika patch for Jaws.

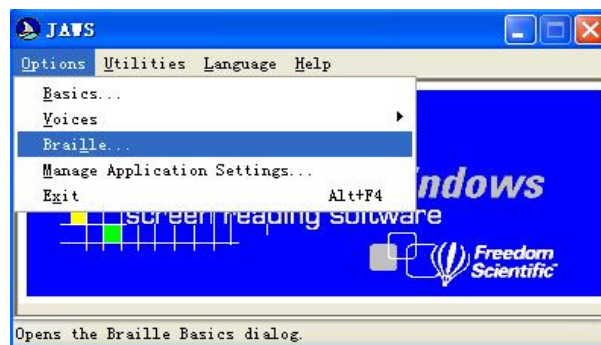
1. Installing Seika Patch for JAWS

- Open the “Seika patch for JAWS” folder in the CD. Run the Seika Patch for JAWS according to your Windows operating system.
- Install the patch by default steps. The Seika Patch for JAWS will be installed by the JAWS Utility automatically. A console window appears and it will take several minutes.

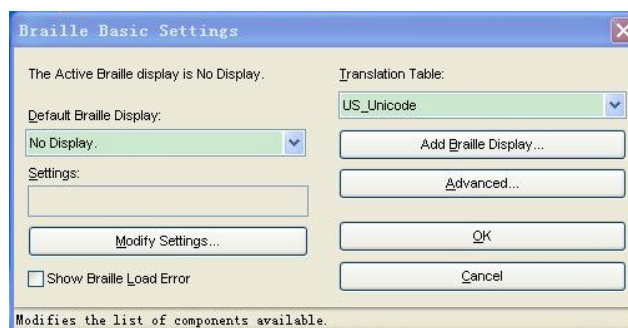
2. Working in JAWS

2.1 Configuring JAWS

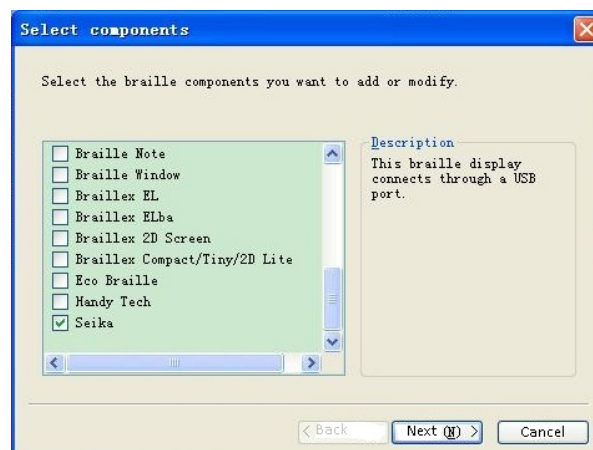
- Start JAWS and select “Braille...” in the “Options” menu.



- Assuming that the default Braille display is set to “No display”, tab to the “Add Braille Display” button and press enter.

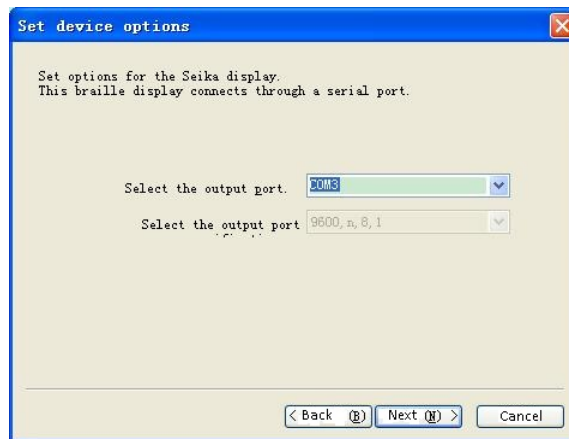


- In the “Select components” dialog box, there is a list of Braille displays. Select the “Seika” by pressing the space bar.

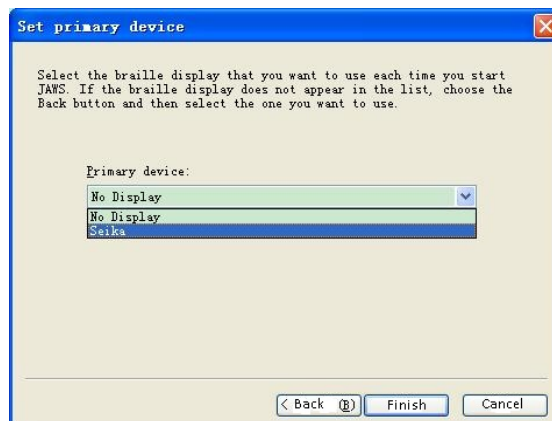


- Tab to the “Next” button and press enter.
- If you connected Seika Braille display with your computer by USB cable, the output port will be set automatically, it does not need change.

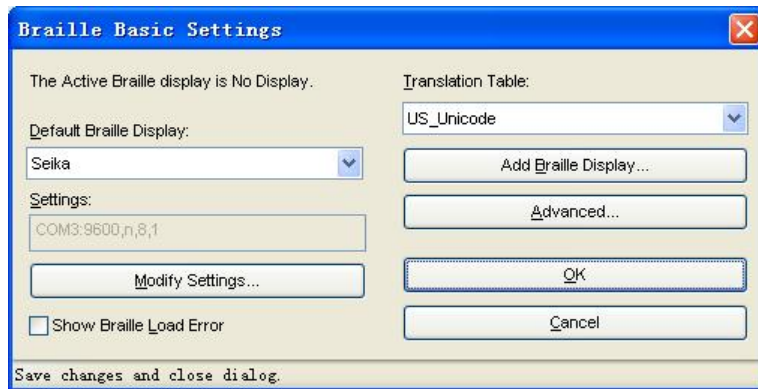
If you connect Seika display to your computer using Bluetooth, in the “Set device options” dialog box, select the output port that corresponds to the COM port number that you make the note in chapter 4.



- Tab to the “Next” button and press enter.
- When prompted to set the primary device, select “Seika” in the “Primary device” list.



- Tab to the “Finish” button and press enter.
- In the “Braille Basic Settings” dialog box, tab to the “OK” button and press it.

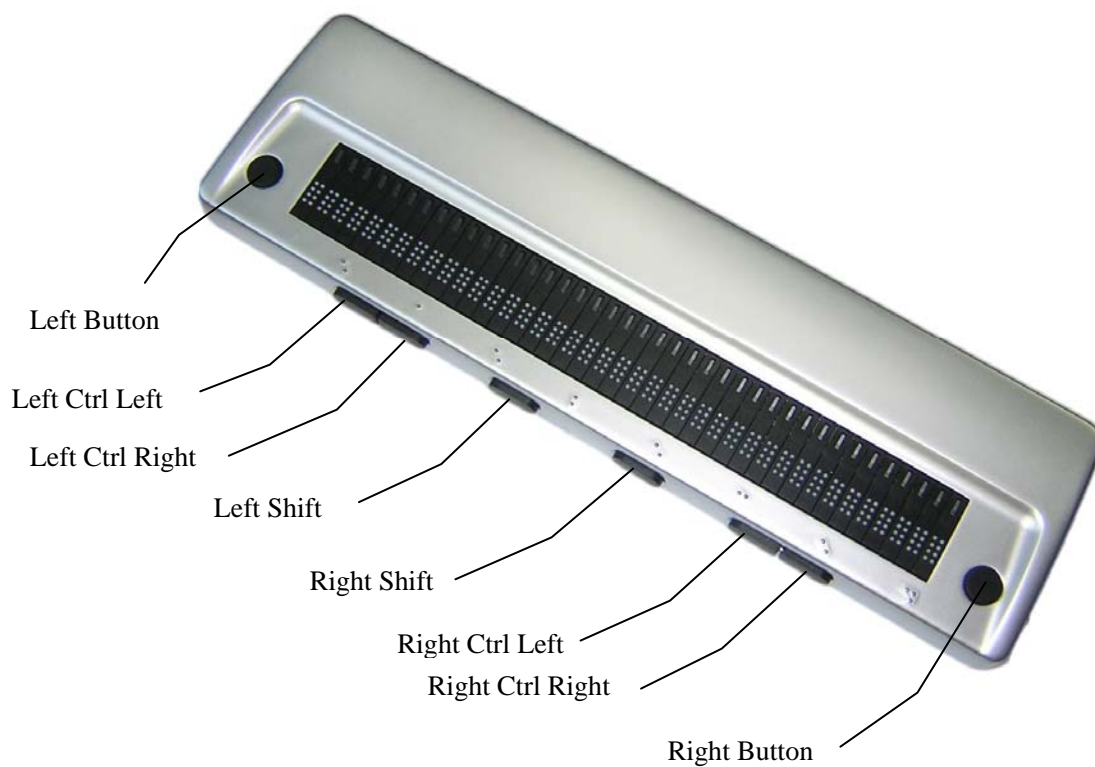


- Restart the JAWS and the Seika Braille Display will work now.

NOTE: if the Seika could not work with Jaws, please check the setting of output port in Jaws by the following steps.

- Run the “Detect Seika COM Port V1.0.exe” in the “tool” folder in the CD; remember the Seika COM port number.
- In the “Braille Basic Settings” dialog box, press the button of “Modify Settings...”. In the “set device options” dialog box, you can manually select the output port which you remember.

2.2 Navigation and control keys function



Braille Commands:

Description	Command
Braille Mode Toggle	Left Button + Right Button
Attribute/Character mode toggle	Left Ctrl Left + Right Ctrl Left
Adjust Braille Option Dialog	Left Ctrl Left + Left Shift
Attribute Marking Off	Left Button + Left Ctrl Left + Left Shift
Braille Marking Off	Left Button + Left Ctrl Left + Left Shift
8-Dot/6-Dot Toggle	Right Shift + Left Shift + Right Ctrl Right
8 Pixels/Unlimited Pixels Per Space	Left Shift + Right Shift + Right Ctrl Left
Repeat Last Flash Message	Left Ctrl Left + Right Ctrl Right

Navigation Commands:

Description	Command
Auto Advance Mode	Left Ctrl Right + Right Ctrl Left
Increase Auto Advance Speed	Left Button + Right Shift
Decrease Auto Advance Speed	Left Button + Left Shift
Top Of Window	Left Ctrl Left
Bottom Of Window	Left Ctrl Right
Pan Left	Left Button
Pan Right	Right Button
Braille Next Line	Right Ctrl Left
Braille Prior Line	Right Ctrl Right
PAGE DOWN (Active Cursor)	Left Ctrl Right + Right Shift
PAGE UP (Active Cursor)	Left Ctrl Left + Right Shift
TAB	Left Shift + Right Ctrl Left
CTRL+TAB	Left Ctrl Right + Right Button
SHIFT+TAB	Left Shift + Right Ctrl Right
CTRL+SHIFT+TAB	Left Ctrl Left + Right Button

Cursor Commands:

Description	Command
Braille follows Active	Left Shift
Active follows Braille	Left Shift + Right Shift
Route Braille To Active	Right Shift
Screen Reader Cursor	Right Button + Right Ctrl Left
Mouse Button Right Click	Left Shift + Right Button
PC Cursor	Right Button + Right Ctrl Right
Route Screen Reader to PC Cursor	Right Shift + Right Ctrl Right
Route PC to Screen Reader Cursor	Right Shift + Right Ctrl Left
Select Text	Any Cursor Routing Button + Right Shift

3. Uninstalling the patch of JAWS

NOTE:

Uninstall the patch of JAWS will disable the Seika Braille Display work with JAWS and delete all the patch files.

You must uninstall this patch before uninstall the JAWS.

3.1 Uninstall the old version of Seika patch for Jaws

Open the “Add or Remove Programs” in the “Control Panel”, and select the item: “Seika Braille Display version 3” or “Seika Patch for JAWS V1.x” or “Seika Patch for JAWS V2.x”. Uninstall the item step by step. The uninstall will taking several minutes. Please restart computer after finished.

3.2 Uninstall the current version of Seika patch for Jaws

Open the “Add or Remove Programs” in the “Control Panel”, and select the item: “Seika Patch for JAWS V2.3”. Uninstall the “Seika Patch for JAWS V2.3” step by step. The uninstall will taking several minutes. Please restart computer after finished.

Chapter 6 – Using Seika Braille Display with Window-Eyes

NOTE:

The below steps assume that you have already installed Seika driver and Window-eyes version 7.2 or later. If you have not installed Seika driver, please refer to Chapter3.

1. Working in Window-Eyes

1.1 Configuring Window-Eyes 7.2

- If you connect Seika Braille display to your computer using USB cable, run the “Detect Seika COM Port V1.0.exe” in the “tool” folder in the CD, remember the Seika COM port number.

If you connect Seika display to your computer using Bluetooth, in the “Set device options” dialog box, select the output port that corresponds to the COM port number that you make the note in chapter 4.

- Start Window-eyes 7.2.
- Select “File” in Window-Eyes, and then select “Select Braille Display”.
- Select “Seika” in “Braille” option.
- In “Ports” option, if you connect Seika Braille display to your computer using USB, select the Seika COM port number which you remember.

If you connect Seika display to your computer using Bluetooth, select the Seika COM port number that you make the note in chapter 4.

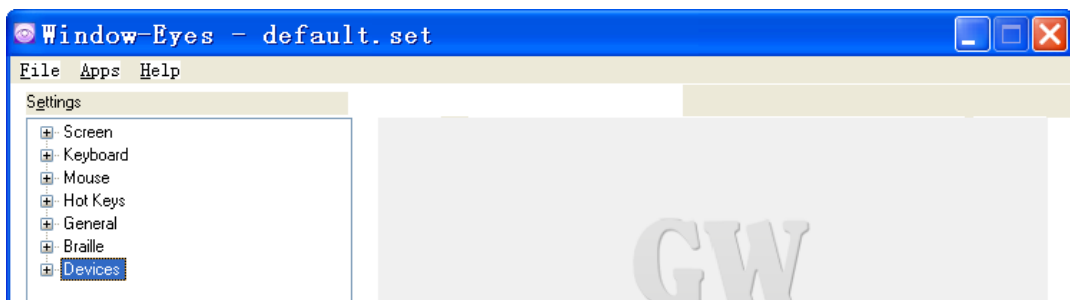
- Select OK button.

1.2 Configuring Window-Eyes 7.5

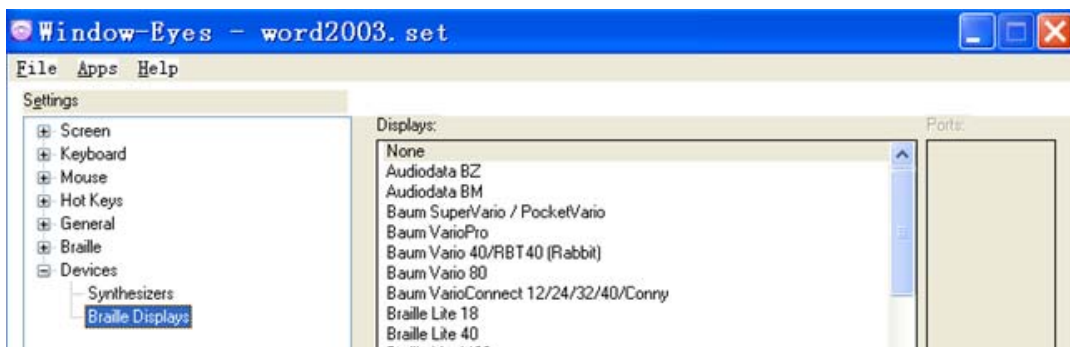
- If you connect Seika Braille display to your computer using USB cable, run the “Detect Seika COM Port V1.0.exe” in the “tool” folder in the CD, remember the Seika COM port number.

If you connect Seika display to your computer using Bluetooth, in the “Set device options” dialog box, select the output port that corresponds to the COM port number that you make the note in chapter 4.

- Run the “Detect Seika COM Port V1.0.exe” in the “tool” folder in the CD; remember the Seika COM port number.
- Start Window-eyes 7.5 and select “Device” in the “Settings” list.

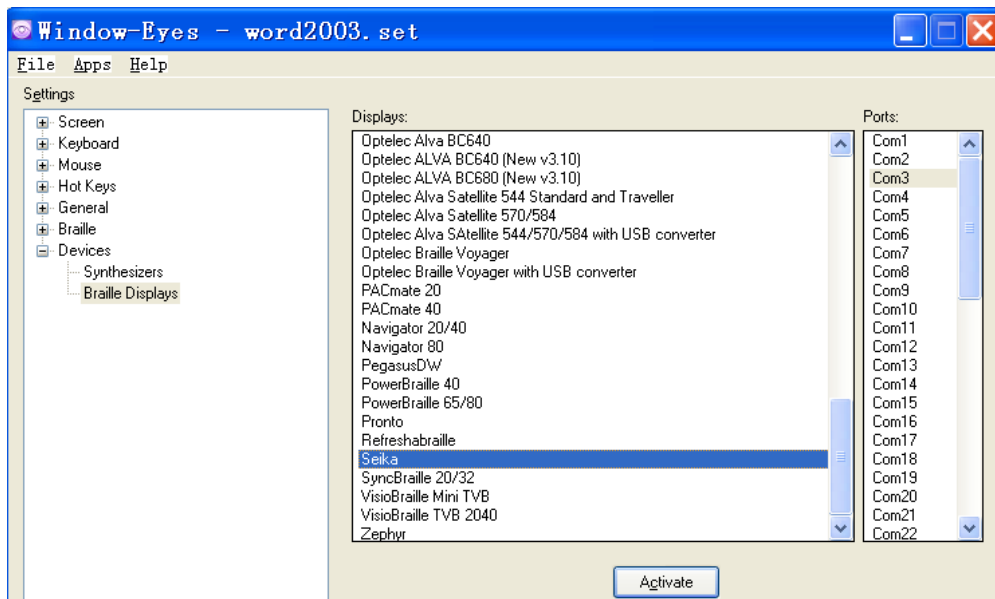


- Select “Braille Display” in the “Device” list.

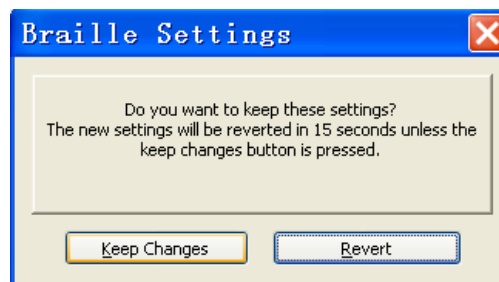


- In “Displays” option, select “Seika” option.
- In “Ports” option, if you connect Seika Braille display to your computer using USB, select the Seika COM port number which you remember.

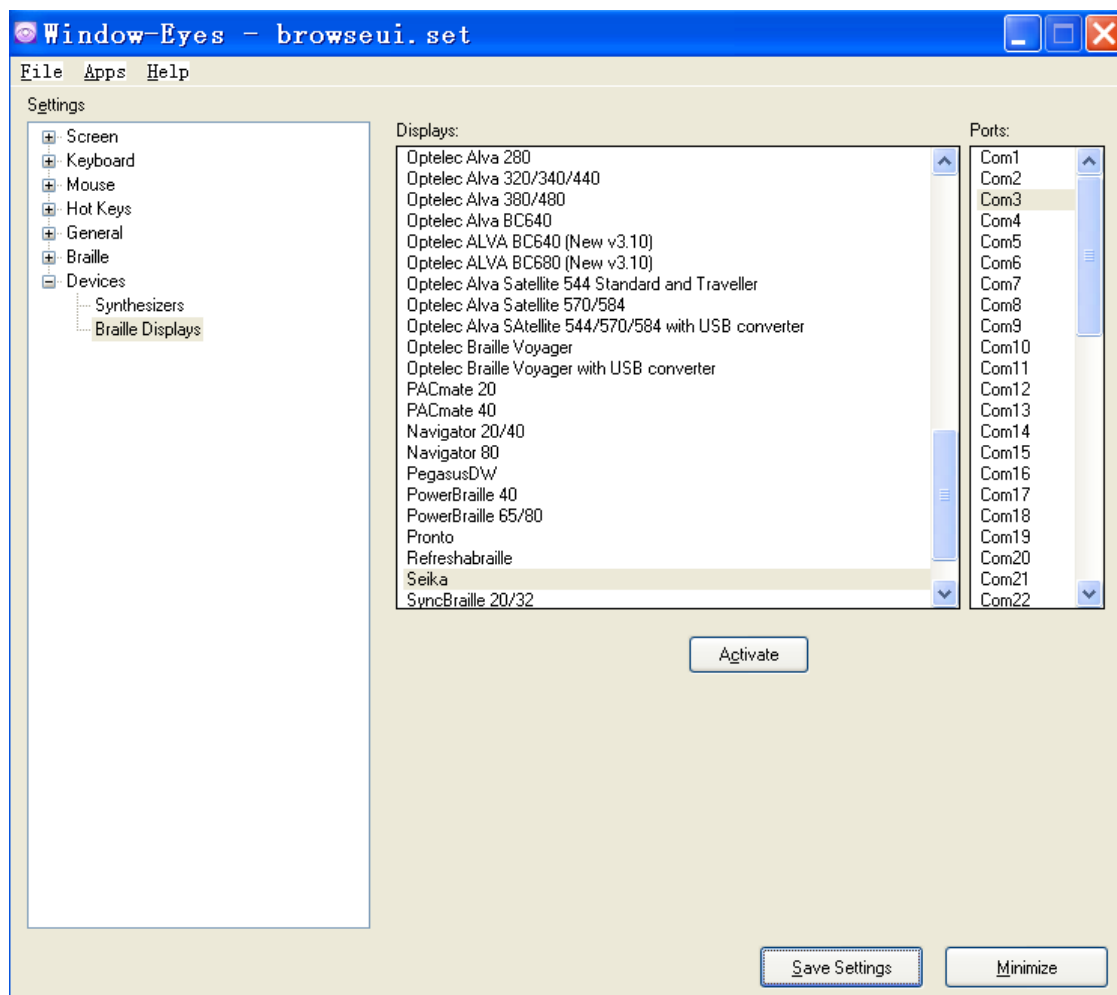
If you connect Seika display to your computer using Bluetooth, select the Seika COM port number that you make the note in chapter 4.



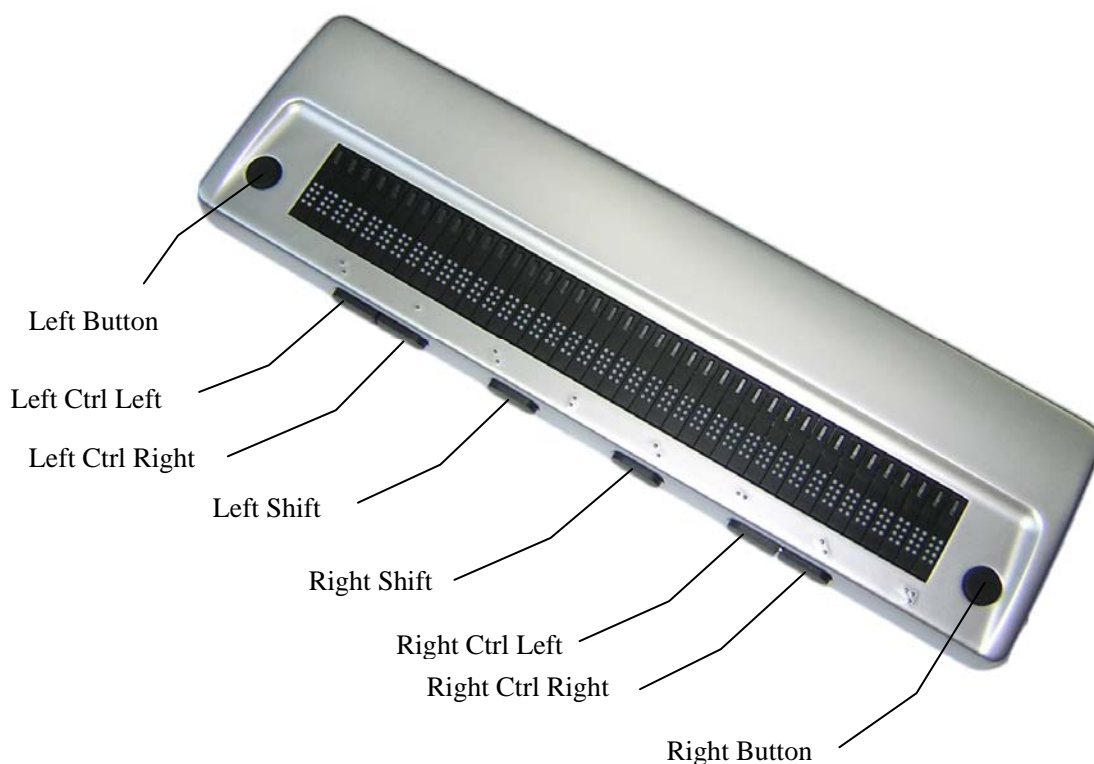
- Tab to the “Activate” button and press Enter.
- Select “Keep Changes” button in the “Braille Settings” dialog box, then press Enter.



- Tab to “Save Settings” button and press Enter.



2. Navigation and Control keys function



Description	Key Press
Scroll Braille Left	Left Button
Scroll Braille Right	Right Button
Prior Braille Line	Left Ctrl Left
Next Braille Line	Left Ctrl Right
Top Line	Right Ctrl Left
Bottom Line	Right Ctrl Right
Mouse Top Left	Left Button + Left Ctrl Left
Mouse Bottom Left	Left Button + Left Ctrl Right
Mouse Top Right	Right Ctrl Left + Right Button
Mouse bottom right	Right Ctrl Right + Right Button
To Focus	Left Button + Right Button
Grade 2 Braille Toggle	Left Shift + Right Shift
Untranslate At Cursor	Left Shift + Right Ctrl Left

Untranslate At Mouse	Left Shift + Right Ctrl Right
Scroll Mode Toggle	Left Ctrl Left + Right Ctrl Left
Spacing Toggle	Left Ctrl Right + Right Ctrl Right
Attributes To Show Rotor	Left Ctrl Left + Right Shift
Show Attributes Toggle	Left Ctrl Right + Right Shift
Quick Message Rotor	Left Ctrl Right + Right Ctrl Left
Display Individual Attribute Rotor	Left Ctrl Left + Left Shift
Braille graphic mode	Left Ctrl Right + Left Shift
Toggle 6/8 Braille	Right Shift
Braille tracking toggle	Left Shift

3. Update the Seika Braille Display patch for Window-Eyes

Note:

You should manually update the Seika Braille Display patch for Window-Eyes 7.5.1 or earlier version to support the Bluetooth of the Braille display. (The Window-Eyes 7.5.2 will include this update patch.)

- Unconnected the Braille display with the computer.
- Find the installation directory of the Window-Eyes first. For example:

32bit: C:\Program Files\GW Micro\Window-Eyes

64bit: C:\Program Files (x86) \GW Micro\Window-Eyes

You will find update “webrloem107.dll”, “SLABHIDDevice.dll”, “SLABHIDtoUART.dll” files in the “Seika Braille Display Driver for Window-Eyes” folder in CD or the update zip file, copy those to the Window-Eyes directory that you find in the step2, and replace the older files if exist.

Chapter 7 – Using Seika Braille Display with HAL and Supernova

(For HAL version 10 and later)

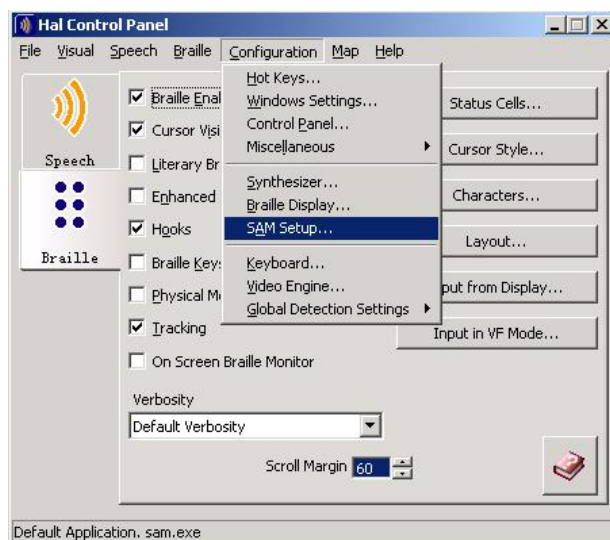
NOTE: The below steps assume that you have already install Seika driver and HAL version 10 or later. If you have not installed Seika driver, please refer to Chapter3.

1. Working in HAL and Supernova

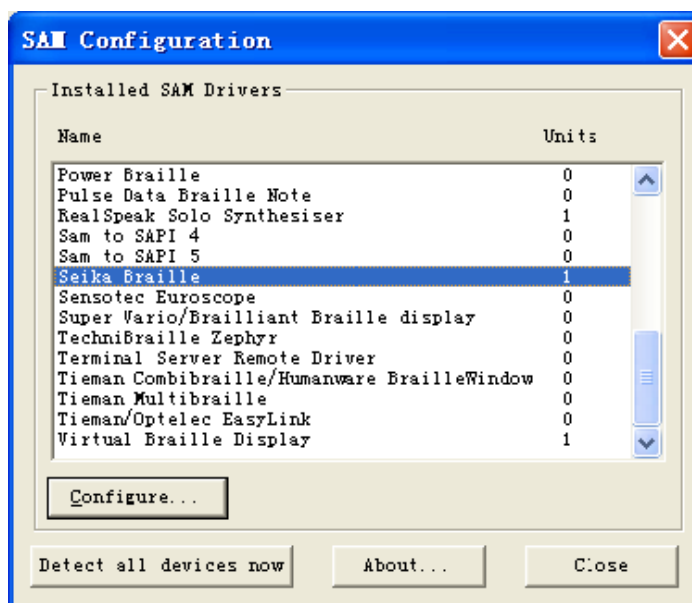
Refer to the “1.1 Configuring HAL Version 10” or “1.2 Configuring Supernova Version 11 and Version 12”.

1.1 Configuring HAL Version 10

- Run HAL.
- Open the HAL Control Panel Window.
- Select Configuration.
- Select SAM Set UP.



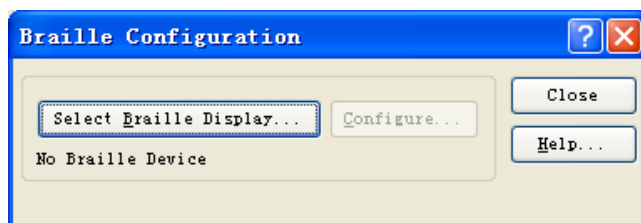
- Select “Detect All Devices now”.



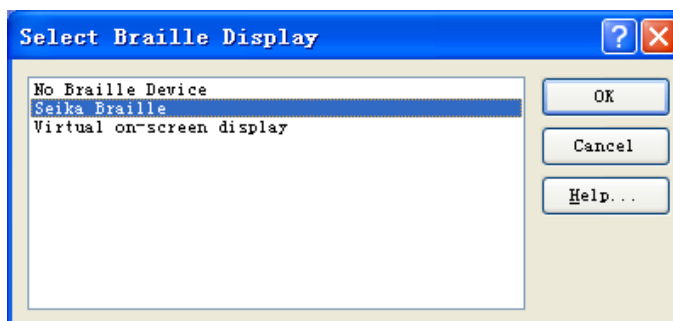
- HAL will automatically detect the Seika Braille.
- Return to the HAL Control Panel Window.
- Select “Braille Display”.



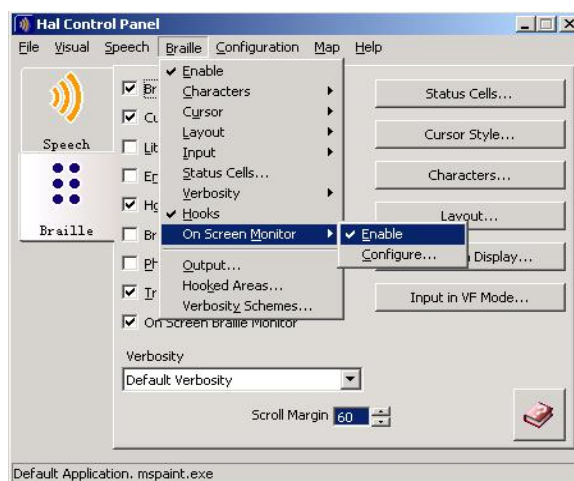
- Click “Select Braille Display”.



- Select the “Seika Braille” from the list and click “OK”.



- Return to HAL Control Panel.
- Ensure that the On Screen Monitor is enabled.



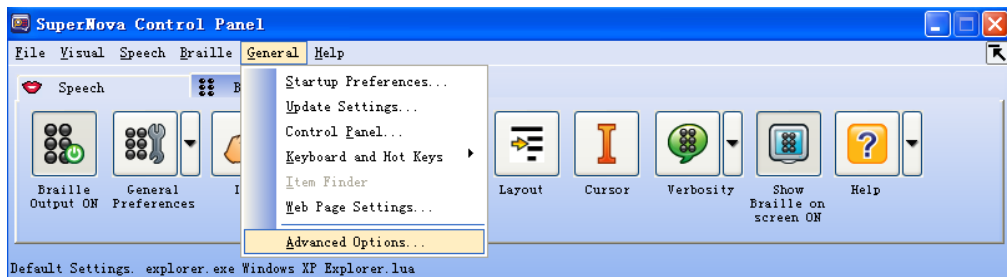
- Restart your HAL.

1.2 Configuring Supernova Version 11 and Version 12

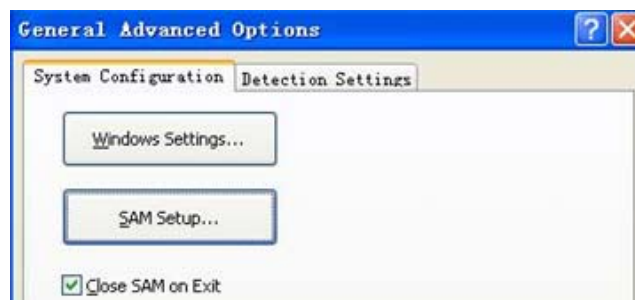
- If you connect Seika Braille display to your computer using USB cable, run the “Detect Seika COM Port V1.0.exe” in the “tool” folder in the CD, remember the Seika COM port number.

If you connect Seika display to your computer using Bluetooth, in the “Set device options” dialog box, select the output port that corresponds to the COM port number that you make the note in chapter 4.

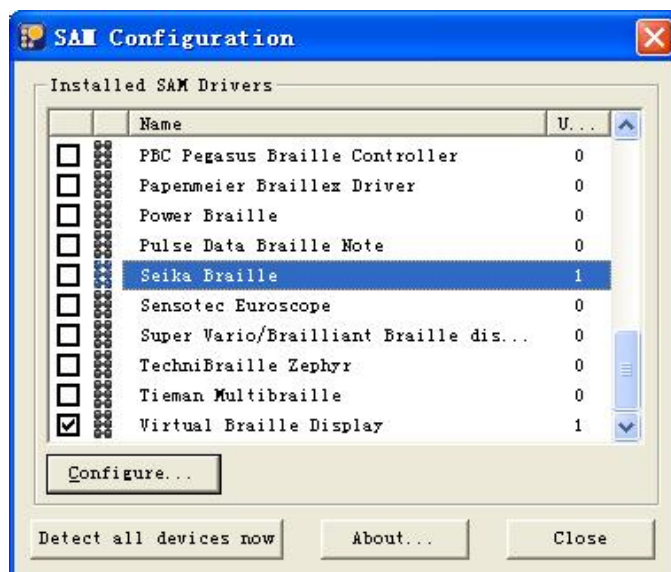
- Run Supernova.
- On the “Supernova Control Panel”, select “Advanced Options...” from the menu item “General”.



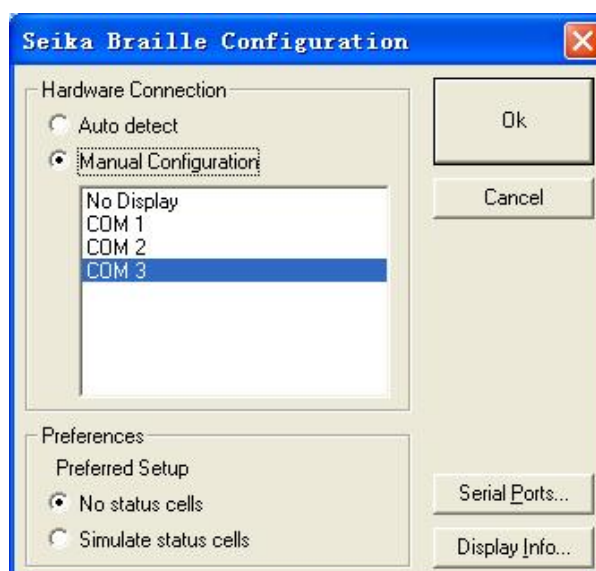
- Select “System Configuration” tab, tab to “SAM Setup...” and press enter.



- Check the “Seika Braille” item on the “SAM Configuration” dialog box. Tab to the “Configure...” button and press enter.

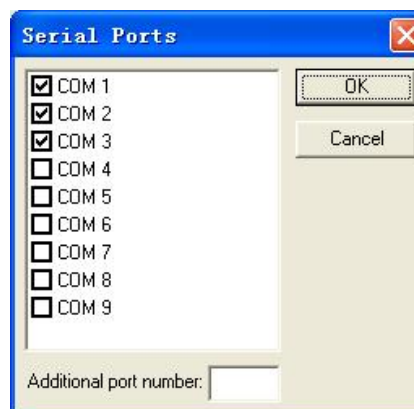


- Select the “Manual Configuration” radio button, tab to the “Serial Ports...” button and press enter.



- In the list of COM ports, if you connect Seika Braille display to your computer using USB, select the Seika COM port number which you remember and press “OK” button.

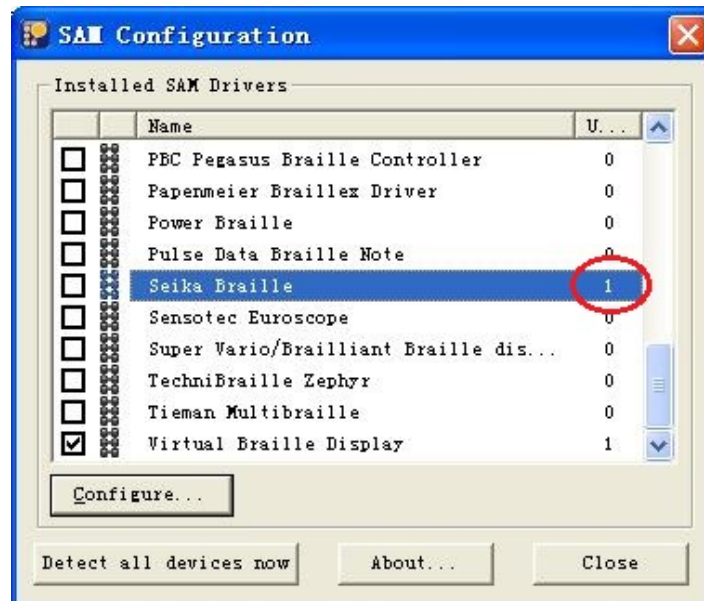
If you connect Seika display to your computer using Bluetooth, select the port that corresponds to the COM port number that you make the note in chapter 4.



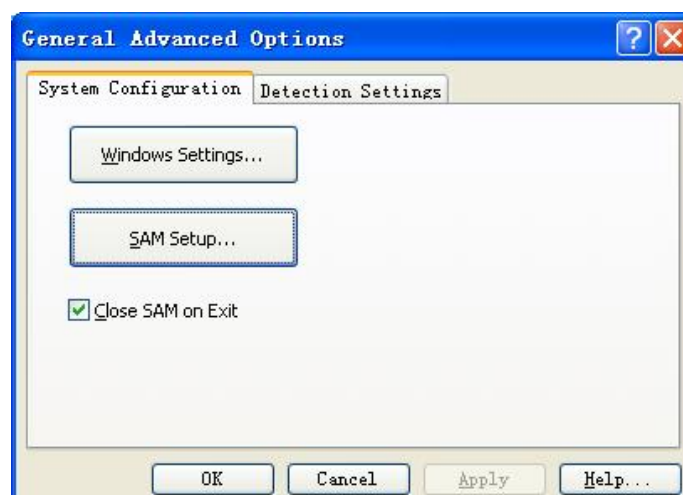
- In the “Seika Braille Configuration” dialog box, select the serial port you have just checked and tab to the “OK” button and press.



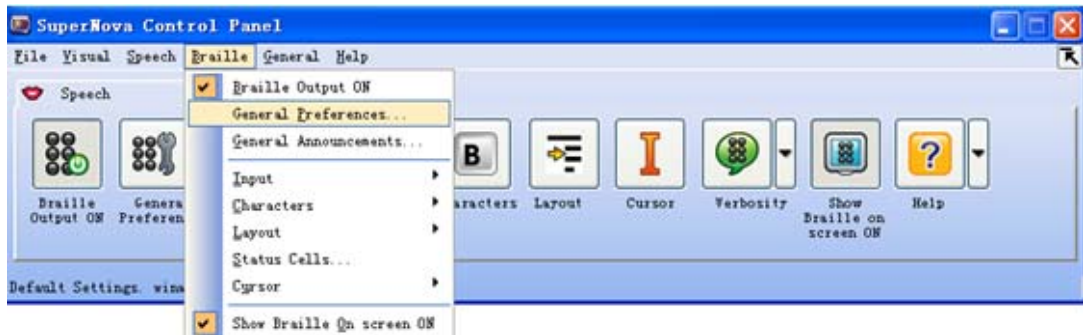
- In the “SAM Configuration” dialog box, the units of the Seika Braille is 1. The Seika Braille connects to the Supernova is successful. Tab to the “Close” button and press enter.



- Tab to the “OK” button and press enter in the “General Advanced Options” dialog box.



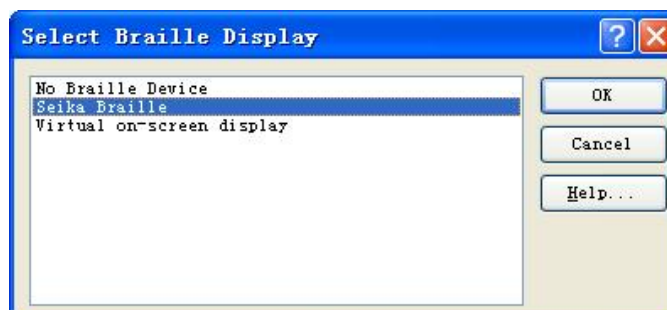
- On the “Supernova Control Panel”, select “General Preferences...” from the menu item “Braille”.



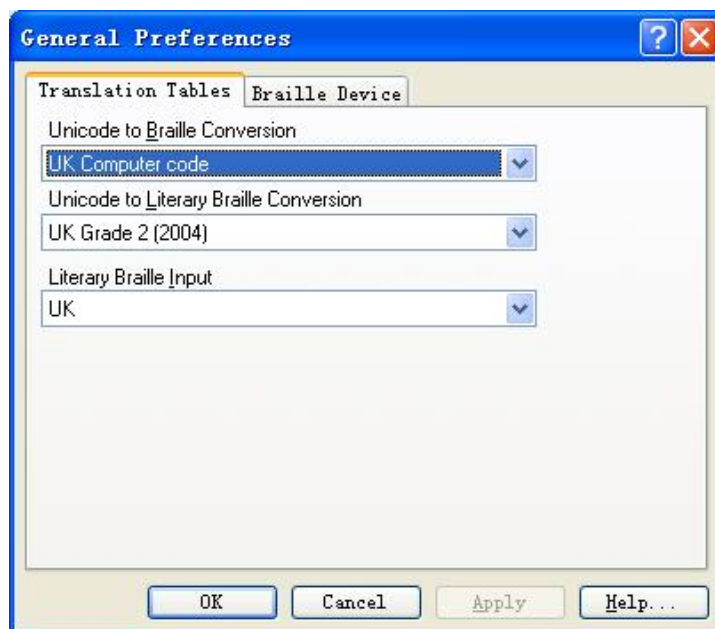
- Select “Braille Device” tab in the “General Preferences” dialog box, tab to the “Select Braille Display” button and press enter.



- Tab to the “Seika Braille” item in the “Select Braille Display” dialog box and press “OK” button.



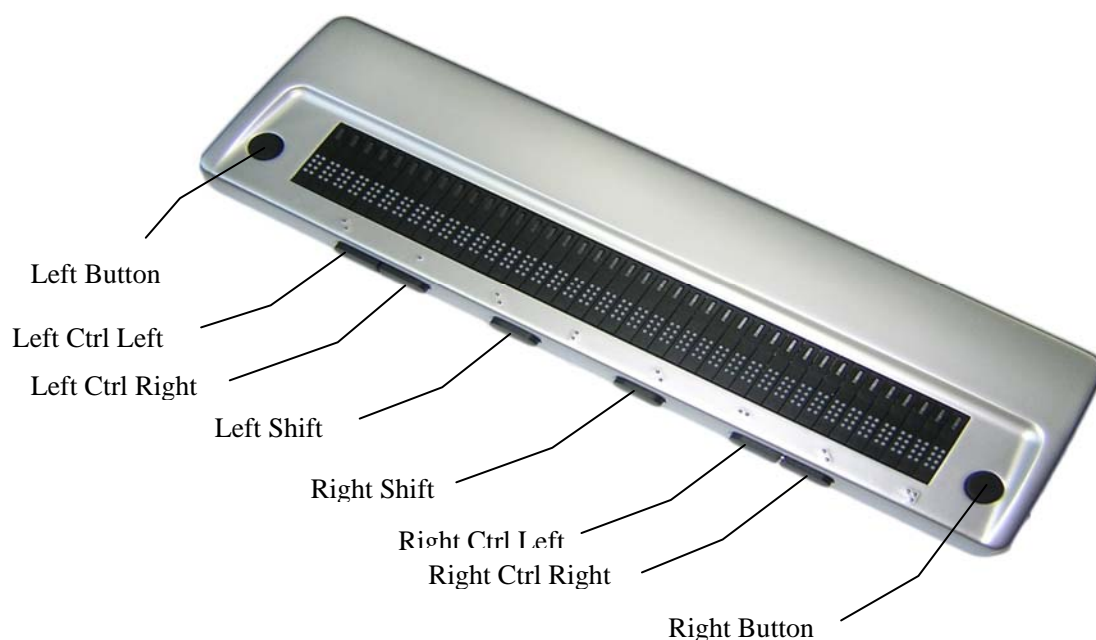
- Select “Translation Tables” tab in the “General Preferences” dialog box. Configure the “Unicode to Braille Conversion”, “Unicode to Literary Braille Conversion” and “Literary Braille Input” according to the local language. Tab to the “OK” button and press enter.



- Restart your Supernova and Seika Braille Display will work now.

NOTE: If you use another model Seika Braille display, please repeat the step of “1.Working in HAL and Supernova”.

2. Navigation and Control keys function



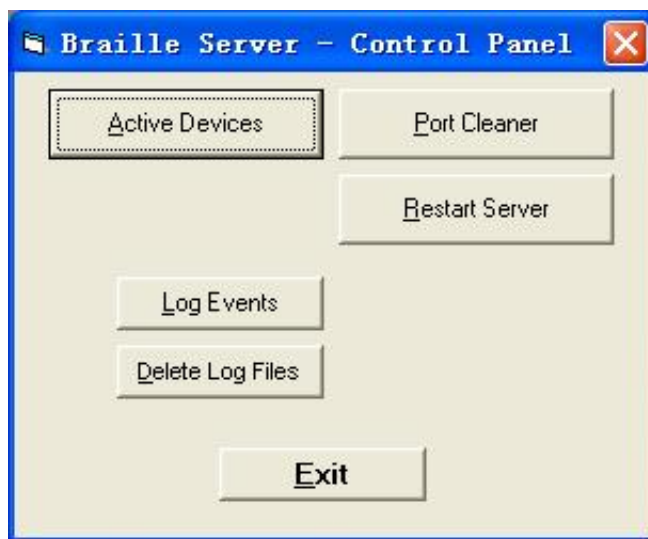
Action	Key press
Braille Back	Left Button
Braille Forward	Right Button
Braille Line up	Right Ctrl Right
Braille Line down	Right Ctrl Left
Braille Go To Focus	Left Shift
Braille Line Start	Left Button + Right Ctrl Right
Braille Line End	Left Button + Right Ctrl Left
Braille Top	Left Button + Left Ctrl Left
Braille Bottom	Left Button + Left Ctrl Right
Braille Cell Left	Right Ctrl Right + Right Button
Braille Cell Right	Right Ctrl Left + Right Button
Braille Physical/Logical Mode	Left Ctrl Left + Right Ctrl Right
Braille Cycle Attributes	Left Ctrl Left
Braille Describe Character on off	Left Ctrl Right
Braille Output On Off	Left Ctrl Right + Right Ctrl Left
Braille tracking on off	Right Shift

Chapter 8 – Using Seika Braille Display with COBRA

NOTE: The below steps assume that you have already install COBRA and Seika driver. If you have not installed Seika driver, please refer to Chapter3.

1. Configuring COBRA

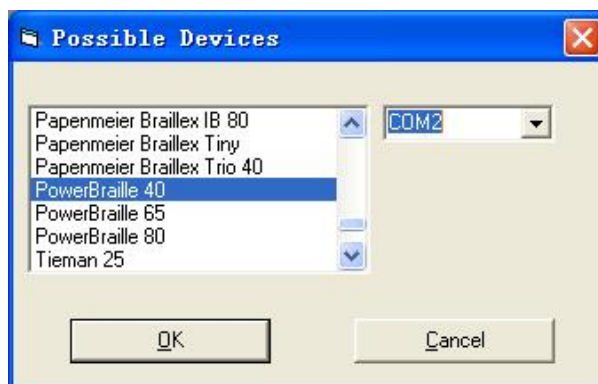
- If you connect Seika Braille display to your computer using USB cable, run the “Detect Seika COM Port V1.0.exe” in the “tool” folder in the CD, remember the Seika COM port number.
- Start COBRA by pressing left CTRL+ALT+Shift+F7.
- From the Start Menu, select Programs, BAUM Retec, Braille Server, then “Control Panel”.



- Select “Active devices”.



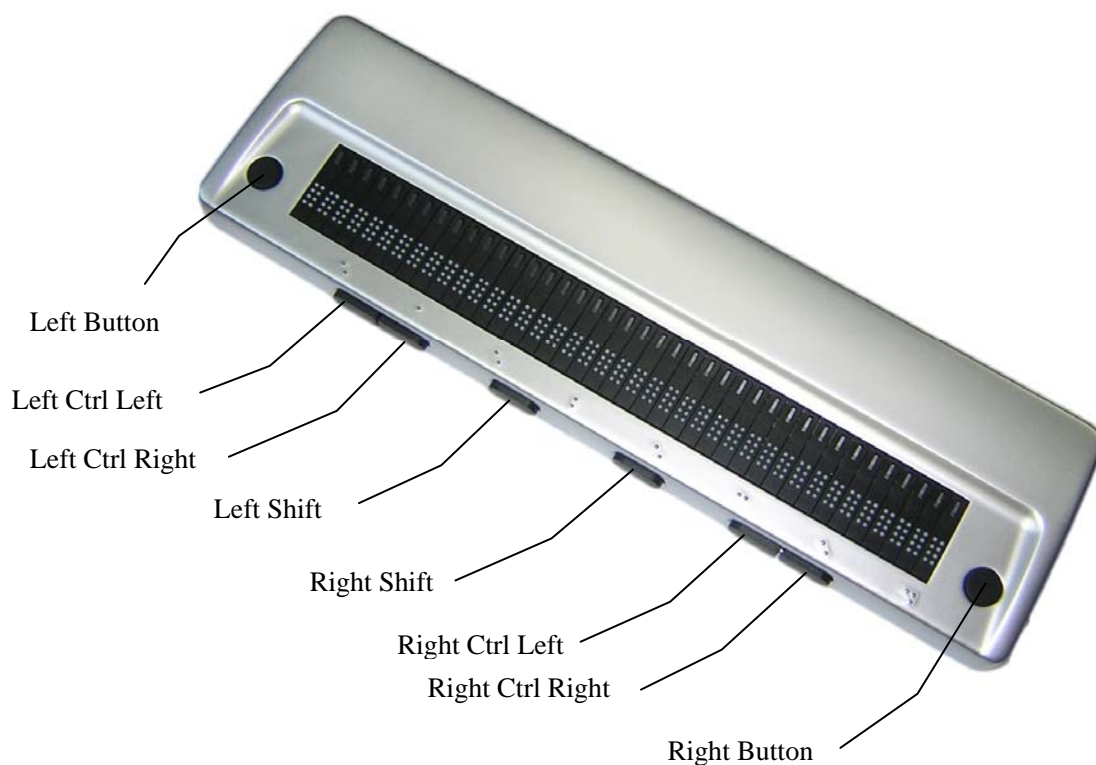
- Click on “Add device”.



Select the desired display from the list and type the port to which you remember.

- Click on “OK” to reboot the Braille Server.
- Please also reboot COBRA, so that it can recognize the new Braille display.
- Start COBRA by pressing left CTRL+ALT+Shift+F7 again. This combination must be held for at least one second.

2. Navigation and Control keys function



Action	Key press
Scroll left	Left Button
Scroll right	Right Button
Previous item or up screen	Left Ctrl Left
Next item or down screen	Left Ctrl Right
Shift + Tab	Right Ctrl Right
Tab	Right Ctrl Left
Move navigation to focus	Left Shift
Focus is in element mode	Left Button + Left Ctrl Left
Focus is in line mode	Left Button + Left Ctrl Right
Navigation is in line mode	Left Button + Right Ctrl Left
Navigation in element mode	Left Button + Right Ctrl Right
Move navigation to the top	Left Ctrl Left + Right Ctrl Right
Move navigation to the bottom	Left Ctrl Right + Right Ctrl Left
Escape	Left Ctrl Left + Right Button
Enter	Left Ctrl Right + Right Button

Chapter 9 – Using Seika Braille Display with NVDA

1. Configuration of BRLTTY

Before using Seika Display with NVDA, please install BRLTTY (for windows) and configure BRLTTY as follows:

- Make sure that Seika Display driver has been installed successfully and Seika Braille Display has been connected with your computer.
- Run the “Detect Seika COM Port V1.0.exe” in the “tool” folder in the CD; remember the Seika COM port number.
- Double click “brltycnf.exe” to chose “Seika” at Braille display list
- In the COM port list, select the Seika COM port which you remember. Click OK button to save and exit.
- Double click “install.bat” to install BRLTTY service.
- You will hear beeps when BRLTTY starts to work successfully as system service and Braille Display will update display. If not, please reboot computer with connecting display and “brlty.exe” will run automatically.

2. Configuration of NVDA

To use Seika Display with NVDA through brlty, please configure NVDA as follows:

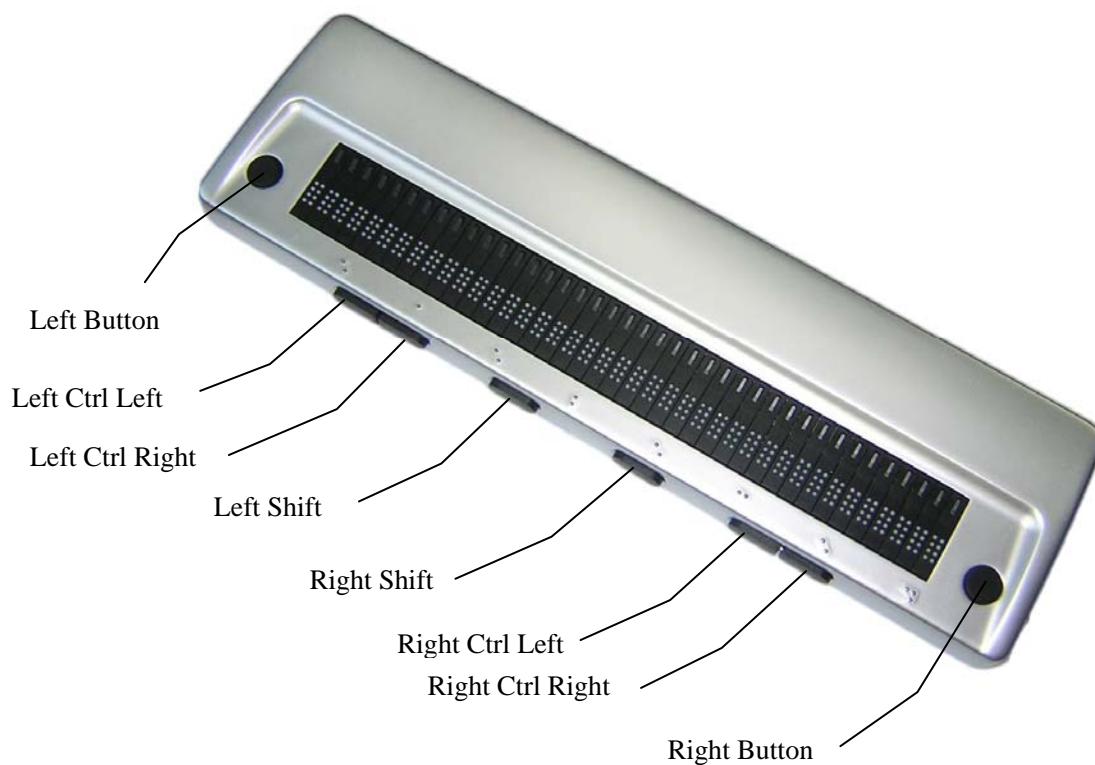
- Run “nvda.exe”, select “preference”, and select “Braille settings”.
- Select “brlty” at Braille display list, click OK to save and exit.

3. Reconnection

For any reconnection needs, please reboot computer or configure brlTTY as follows:

- Run “uninstall.bat” to uninstall service.
- Do the same as Configuration of BRLTTY.

4. Navigation and Control keys function



Description	Key Press
Scroll Braille Left	Left Button
Scroll Braille Right	Right Button
Braille Prior Line	Left Ctrl Left
Braille Next Line	Left Ctrl Left

Chapter 10 – FLASH DISK READING MODE



【Caution】 : The following instructions are very important:

- Braille display could read BSE, BRL, BRF files.
- Please confirm that files are in the root directory of your flash disk, and the file name is not more than eight letters.

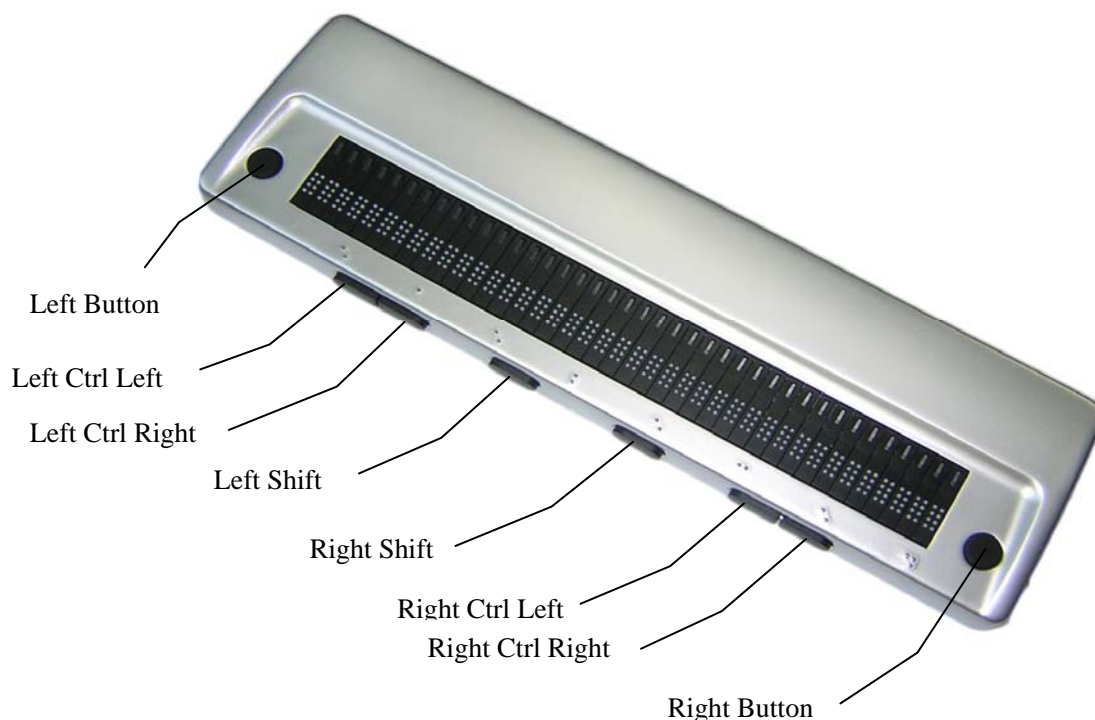
NOTE: It may be a little bit slow when you browse files name and read files in some brand flash disks.

1. Quick Start

- Do not connect Braille display with computer, turn on the Braille display.
- Plug in the flash disk.
- Push Left Button + Right Shift to enter the Flash Disk Reading Mode.
- The first file name will be displayed.
- Push Right Ctrl Left button and Right Ctrl Right button to scroll the file list.
- Push Right Shift button to open the file.
- Push Right Ctrl Left button/Right Ctrl Right button or Left button/Right button to scroll the Braille line.
- Push Left Button + Left Shift to go back to the file list.

- Push Left button + Left Shift again or pull out the flash disk to exit Flash Disk Reading Mode.
- Turn off the Braille display.

2. Control keys



2.1. File Selection

When you plug in the flash disk and push Left Button + Right Shift, you will enter the Flash Disk Reading Mode, and the first file name will be displayed.

Right Ctrl Left or Left Button: Find the previous file name.

Right Ctrl Right or Right Button: Find the next file name.

Left Shift: List the first file name in the USB disk.

Right Shift: Open the file and start read the file.

Left Ctrl left: Move up ten files.

Right Ctrl left: Move down ten files.

NOTE:

“File list Top!” / “File list Bottom!” will be displayed if it reaches the top/bottom of the file list.

2.2. File Reading

Left Ctrl Left: previous page.

Left Ctrl Right: next page.

Right Ctrl Left or Left Button: previous line.

Right Ctrl Right or Right Button: next line.

Left Button +Left Shift: go back to the file list.

Right Shift: no function.

NOTE:

“This is the last line!” will be displayed if it reaches the end of the document.

3. Quit

In order to quit file reading mode, push Left Button + Left Shift twice (when you are reading the file) or only once (when you are in the file selection list). You can also pull out the flash disk to quit file reading mode. After you quit the file reading mode, the following message will be displayed:

“QUIT THE FLASH DISK MODE!”

Chapter 11 - Display Specifications

Display system	8 dots Braille
Display capacity	40 cells
Cursor key	8 Control keys
Touch cursor key	40 keys
Character code	original code
Interface	USB /MINI USB /DC
Power supply	Bus power/AC adapter/Battery
Size	12.99(W) x 3.58(D) x 0.98 (H)inches
Weight	640g

Q&A

1. How to verify which Virtual COM port has been used by Seika Braille Display

- Run “Detect Seika COM Port V1.0.exe” in the “tool” folder in the CD.
- Seika COM port number will be displayed.

2. How to uninstall the Seika Braille display driver

Open the “Add or Remove Programs” in your Windows operation system, select and remove the item “Silicon Laboratories CP210x USB to UART Bridge”

NOTE: For the old version of Seika driver, select and remove the item according to the following different Windows operation system.

XP: “CP210x USB to UART Bridge Controller”

Win7 32/64bit: “Seika Braille Display System Driver (Driver Removal)”

Vista 32/64bit: “Seika Braille Display (Driver Removal)”

3. Braille display doesn't work

If the Seika Braille display doesn't work, please check Seika Braille display driver and also the screen reader setting.

3.1 Check Seika Braille display driver

- Right click the icon of “My Computer” on desktop, and select “Properties”.
- Select “Hardware” on the top menu, and click the button “Device Manager”.

If there is a yellow interrogation marks before both the item “Other Device” and its subdirectory “Silicon Labs CP210x USB to UART Bridge” in the catalog, it would mean that Seika Braille display driver doesn't work. It is necessary to reinstall the driver.

- Right click “Silicon Labs CP210x USB to UART Bridge”, and select “uninstall”.
- Install the Seika Braille display driver again (refer to Chapter 3).

3.2 Check the screen reader configuration

Run the “Detect Seika COM Port V1.0.exe” in the “tool” folder in the CD; remember the Seika COM port number. Check the COM port setting in your screen reader.